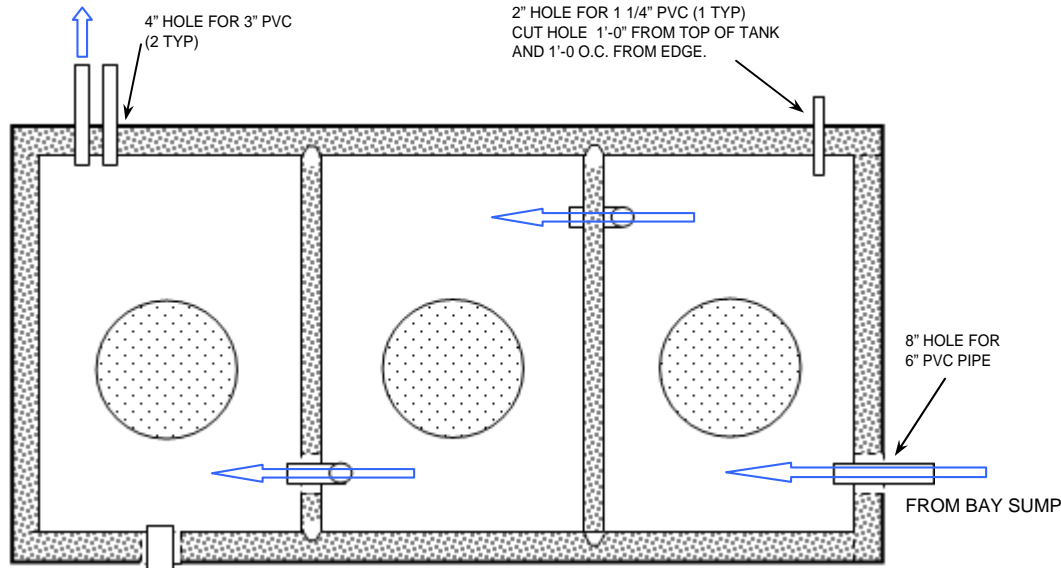
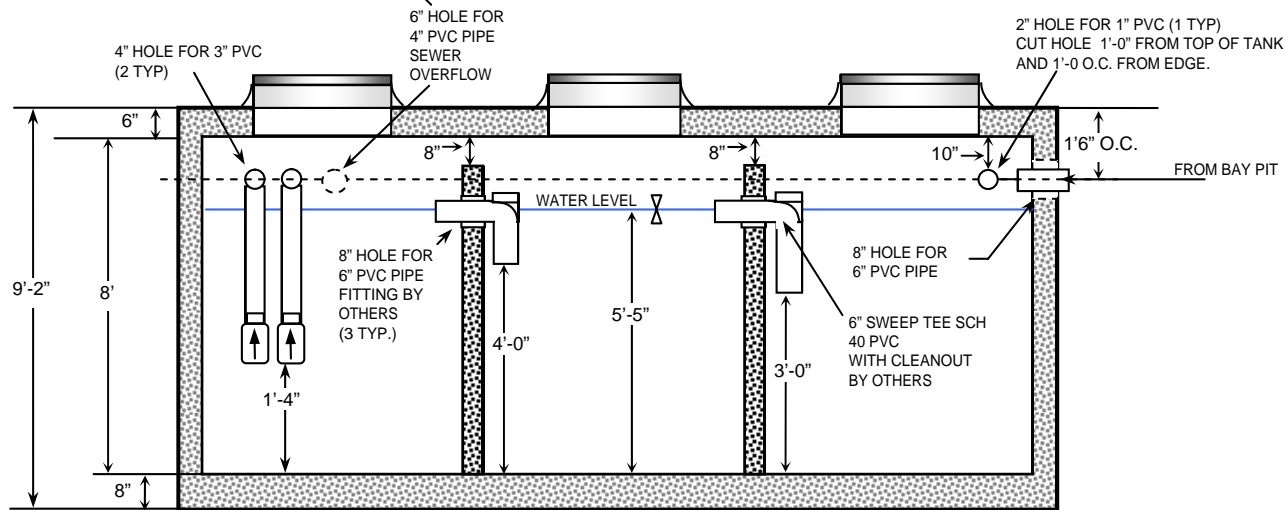


COMPACT RECLAIM TANK



PLAN VIEW



SECTION VIEW

GENERAL NOTES:

1. DO NOT USE RUBBER SEALS!
2. PRECAST SPECIFICATIONS CONFORM TO LATEST ASTM C-913 SPEC FOR "REINFORCED CONCRETE WATER & WAST WATER STRUCTURES.
3. CONCRETE COMPRESSIVE STRENGTH 4000-PSI MINIMUM.
4. STEEL REINFORING CONFORMS TO LATEST ACI-318 SPECS. FOR REINFORCED CONC.
5. PIPE CONNECTIONS TO BE SEALED WITH NON-SHRINK GROUT BY CONTRACTOR
6. SECTION JOINTS TO BE SEALED WITH NON-SHRINK GROUT BY CONTRACTOR.
7. STRUCTURE IS STEEL REINFORCED TO MEET OR EXCEED H-20 LOADING.
8. SEE PLAN VIEW FOR CORRECT ORIENTATION
9. TANK CAPACITY 4000 GALLON MIN.
10. ADJUST TANK DEPTH TO INSURE MIN GALLONAGE.
11. HEIGHT TO MANWAY COVERS DETERMINED BY GRADE ELEVATION. SELECT RISER TO ACCOMMODATE.
12. IMPORTANT ! USE FLAPPER STYLE (SPEARS OR BETTER) INLET CHECK VALVES AT BASE OF SUCTION LINES
 - a. ARROW POINTING UP
13. INCREASE TANK SIZE FOR FLOWS OVER 100 GPM
14. INCREASE PIPING SIZE IF FLOW RATES EXCEED 100 GPM

Precast Concrete In-Ground Tanking

SEE CALLOUTS ABOVE
PLAN VIEW

4000 GALLON RECLAIM TANK TO 100 GPM

1. REVISED 1/7/13 FOR PRECAST
2. PLAN VIEW OF TANKING LAYOUT
3. NOTE HOLE SIZE FOR PIPE
4. COLEMAN HANNA



DRAWN BY: Russ Keller

RECLAIM Filters and Systems